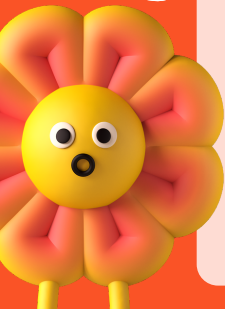




x 11



$$1 \times 11 = 11$$

$$2 \times 11 = 22$$

$$3 \times 11 = 33$$

$$4 \times 11 = 44$$

$$5 \times 11 = 55$$

$$6 \times 11 = 66$$

$$7 \times 11 = 77$$

$$8 \times 11 = 88$$

$$9 \times 11 = 99$$

$$10 \times 11 = 110$$

$$11 \times 11 = 121$$

$$12 \times 11 = 132$$